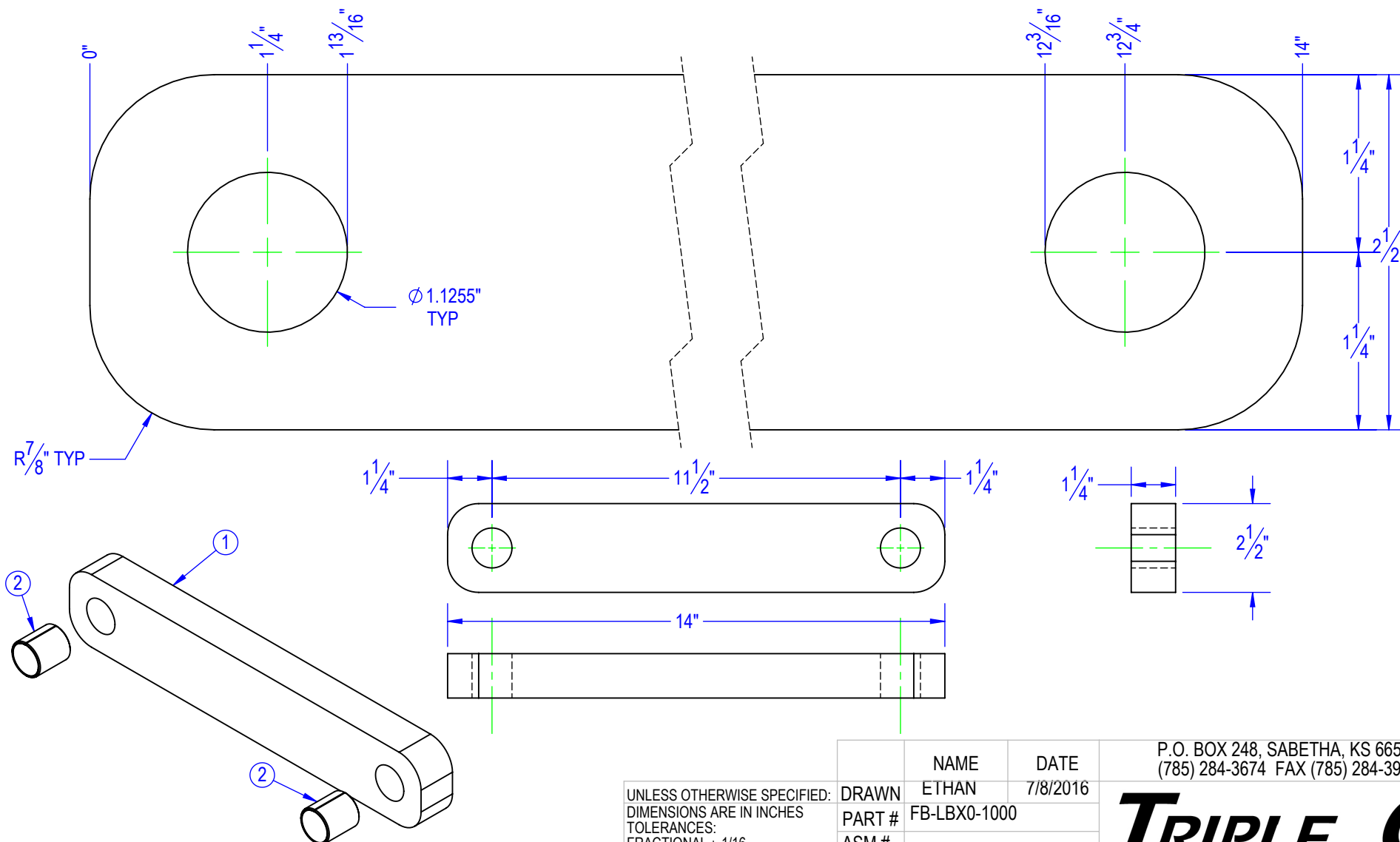


ITEM NO.	PART NUMBER	DESCRIPTION	MATERIAL	QTY.
1	FP-LBX0-1000	LINKAGE BAR (1-1/4), HYDRA BED	STC-FIC 1-1/4 x2-1/2, 1018 Cold Finish	1
2	HD-16TU20	DU BUSHING	STOCK	2

REVISIONS			
REV.	DESCRIPTION	DATE	APPROVED
D	ADDED 3/8" TO OVERALL LENGTH	6/14/2013	
E	REVISED HOLE SIZE AND UPDATED TO INCLUDE POWDERCOAT	7/8/2016	



PROPRIETARY AND CONFIDENTIAL
THE INFORMATION CONTAINED IN THIS
DRAWING IS THE SOLE PROPERTY OF TRIPLE
C INC. ANY REPRODUCTION IN PART OR
AS A WHOLE WITHOUT THE WRITTEN
PERMISSION OF TRIPLE C, INC IS PROHIBITED.

UNLESS OTHERWISE SPECIFIED:
DIMENSIONS ARE IN INCHES
TOLERANCES:
FRACTIONAL ± 1/16
ANGULAR: MACH ± 1 BEND ±
TWO PLACE DECIMAL ± 0.010
THREE PLACE DECIMAL ± 0.005
MATERIAL
STC-FIC 1-1/4 x2-1/2, 1018 Cold Finish

DO NOT SCALE DRAWING

	NAME	DATE
DRAWN	ETHAN	7/8/2016
PART #	FB-LBX0-1000	
ASM #		
COMMENTS:		

LINKAGE BAR (1-1/4),
HYDRA BED

P.O. BOX 248, SABETHA, KS 66534
(785) 284-3674 FAX (785) 284-3931

TRIPLE C
INC

SIZE	DWG. NO.	REV
A	10-1702 E	E
SCALE: 1:4	WEIGHT: 11.50	SHEET 1 OF 1